

Tips to Successfully Prepare for Autonomous Cleaning in Convenience Stores

Implementing autonomous solutions takes planning and preparation. Once the process becomes part of the everyday routine, it becomes simple and cleaning is more consistent and efficient. The end result, more productive teams and a cleaner and healthier facility. Here are some common themes in convenience stores to be aware of before mapping and running autonomous routes:

OBSTACLES

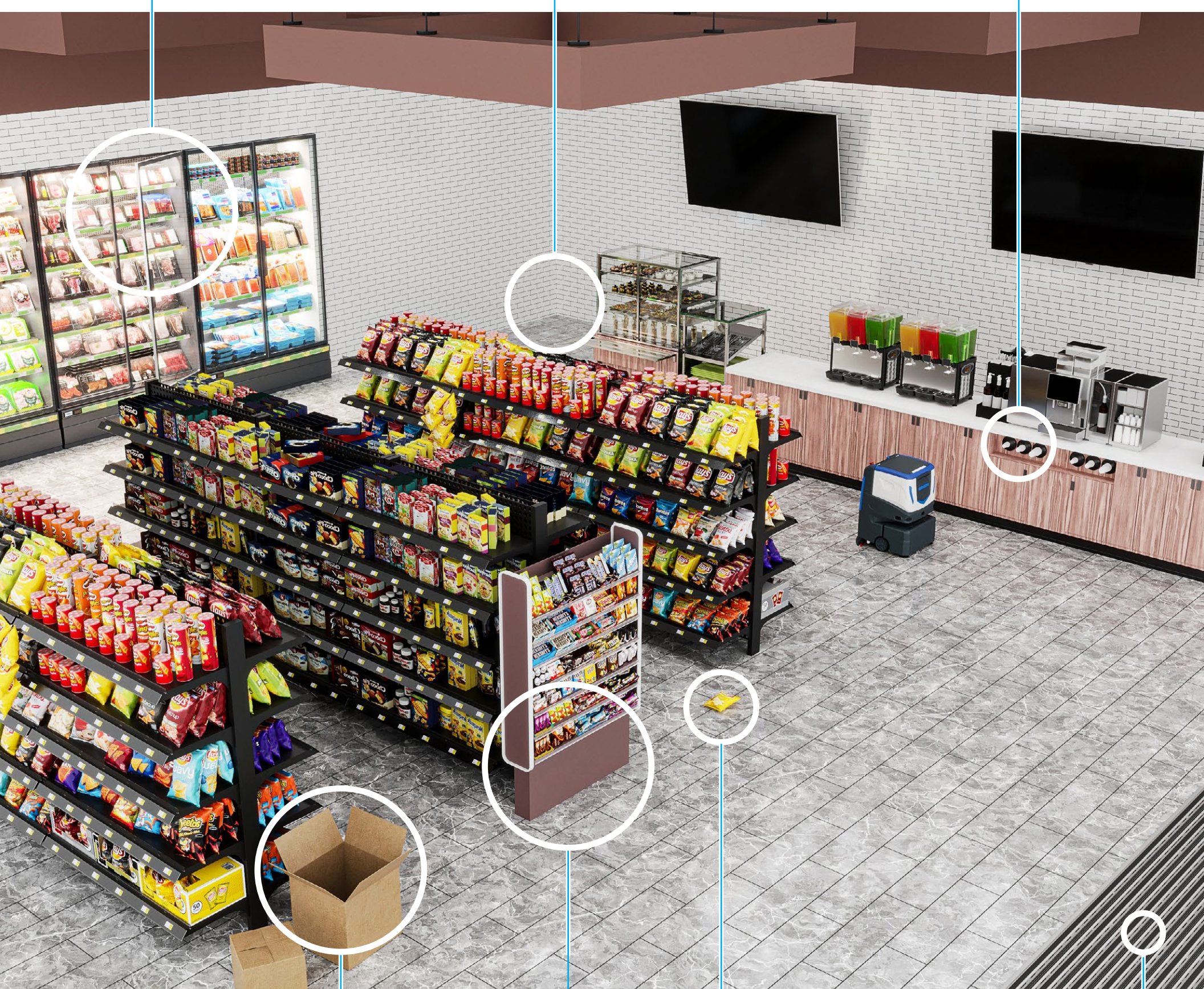
Scan the area for obstacles that may be out of place. Remove the obstacles.

OVERHANGING OBJECTS

If objects, like supplies, overhang into robotic scrubbers view, keep a 2 ft distance from the objects when mapping.

TIGHT SPACES

Understand the robotic scrubber's turn parameters. Avoid spaces where the robot cannot turn around, like tight corners.



TEMPORARY ITEMS

Scan the area for temporary items, like stocking boxes. Remove prior to mapping.

LARGE DEBRIS

Scan the area and remove any large debris or objects that may have fallen off a shelf.

TEMPORARY STRUCTURES

Map around temporary structures. If there is a substantial change in the floor plan, consider mapping a new route.

MATS OR RUGS

Map around mats or rugs or consider training a second route when removed.

ICE Cobotics is a leading technology and cleaning solutions company working to improve wellbeing worldwide. If you would like more information on Cobi 18 or implementing autonomous solutions, reach out to one of our automation experts. We're happy to help!